



# LANDOLL

## SERIES 1550

### IN-ROW RIPPER



### **“Manage your soil or your soil will manage you”**

The Model 1550 is the ideal tool for the control of compaction and residue. A choice of three shanks and five different points lets you choose the ground engaging tool that best fits your tillage practice. A 20” coulters in front of the shank, slices the residue to eliminate plugging. This revolutionary new tool allows you control of compaction, increase water intake in wet weather, and reverse capillary action in times of dry weather. The Model 1550 is the ideal Soil Manager.



# 1550 IN-RROW RIPPER

## FEATURES AND OPTIONS



Parabolic Shank  
1-1/8" x 3" Edge Bent



HD Straight Leg  
1-1/4" x 4"



Narrow Straight Leg  
3/4" x 4"



Dorsal Fin Point  
2" Wide



Shark Fin Point  
Carbide Cap  
2-1/2" Wide



Flat Point  
2" Wide



Wing Point  
8" Wide



Narrow Dorsal Fin  
Fits 3/4" Shank Only  
1-1/2" Wide



**Coulters** - Adjustable spring loaded 20" coulters are standard. Three coulter blade options are available; plain, ripple and notched.

**Coverboards** - 7" fit parabolic shanks and increase the amount of residue mixing and soil coverage

**Rear Hitch and Row Markers** - Optional

**OPTIONAL BEDDING ATTACHMENT** - Add the optional bedding attachment available in 4-row, 6-row and 8-row models. Eliminates the need to buy an additional bedding tool.

### 1550 SPECIFICATIONS

➤ **Five Frames to choose from**

- "A" Mainframe - Rigid 8' and "B" Mainframe - Rigid 11'
  - Double bar 4" x 6" tubing 20" rank
  - Bolt- on wing extensions (17" or 28")
  - 3, 4, 5, 6 and 7 shanks
  - Welded 3-point hitch with cat II & III pins
- "C" Mainframe - Rigid 13'
  - Double bar 4" x 6" tubing 20" rank
  - Bolt on wing extensions (17" or 28")
  - 6, 7, and 8 shanks
  - Welded 3-point hitch with cat III pins
- "D" and "E" Mainframes Folding
  - Double bar 4" x 6" tubing 20" rank
  - Hydraulic wings 33", 46" and 60"
  - 6, 7, 8 and 9 shanks
  - Hydraulic fold wings
  - Welded 3-point hitch with cat III pins

➤ **Row Spacing** - 30", 36", 38" AND 40"

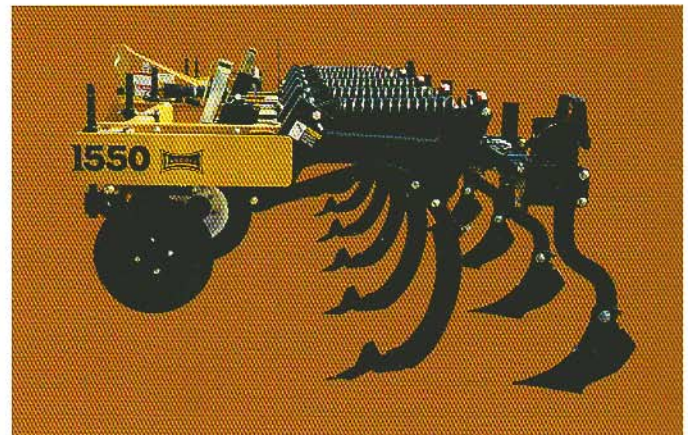
➤ **Horsepower Requirements**

- 25 to 40 PTO horsepower per shank

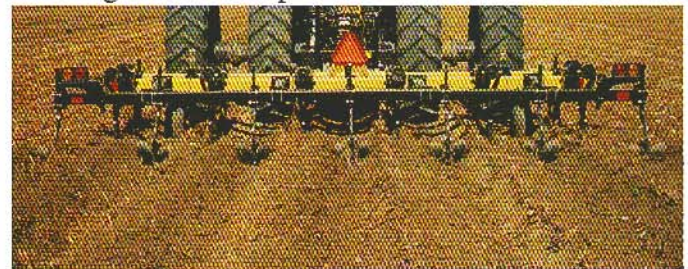
➤ **Coulters** - 20" diameter, adjustable spring cushion

➤ **Gauge Wheels** - Standard

- 2 per machine, 20.5 x 8 tires, screw adjustable



The photo below shows a 1550 deep tilling and bedding all in one operation.



Continuous product improvement is a Landoll goal. Therefore, we reserve the right to make any changes in illustrations, specifications, equipment, and prices without prior notice and without changes on previous models.

800- 428-5655

PO Box 111  
1900 North Street  
Marysville, KS



www.landoll.com